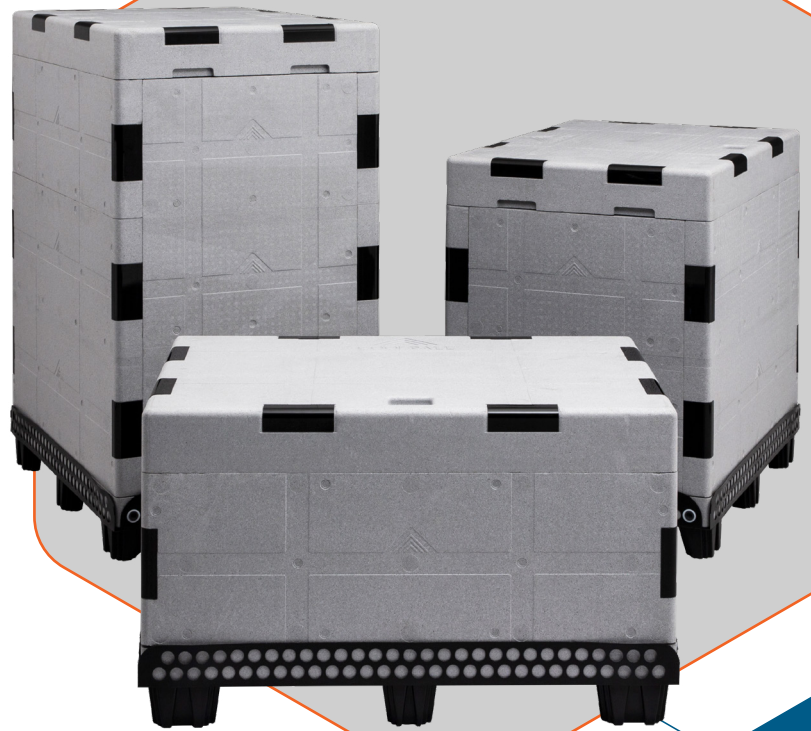




PELI
BIO THERMAL™



COOLPALL™ FLEX WATER

SETTING NEW STANDARDS IN SINGLE-USE BULK SHIPPERS

CoolPall™ Flex is our range of high-performance bulk shippers, available in ISO and EURO footprints. CoolPall™ Flex is highly customisable, allowing users to tailor their shipper to specific shipping lanes or performance requirements, to achieve the optimal thermal protection at lowest overall cost. CoolPall™ Flex Water comprises polystyrene and VIP insulation (in base), together water coolants in single or double configurations, in 3 different sizes (narrow bodied aircraft, half height, full height).

WHY CHOOSE COOLPALL™ FLEX WATER?

- A new approach in the design of bulk shippers
- Performance in excess of 120 hours
- Double pod versions for increased duration
- Narrow Bodied Aircraft, Half Height and Full Height options
- Payload volumes from 150L to 757L
- ISO & EURO footprints available
- Optimised for ULD use for air cargo applications
- Qualified to Peli BioThermal Profiles
- Also available in PCM and Advance (PCM / VIP) versions for higher performance



COOLPALL™ FLEX WATER



DURATION
120 + HOURS



TEMPERATURE

Water Coolant

+2°C to +8°C
+15°C to +25°C



VOLUME
150L – 757L

PELIBIOTHERMAL.COM



WATCH OUR VIDEO ABOUT THIS PRODUCT [CLICK HERE](#)

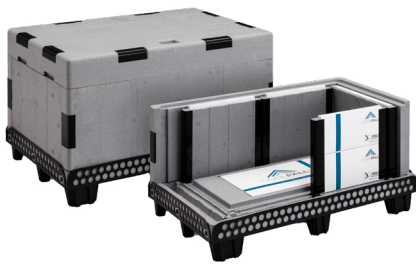
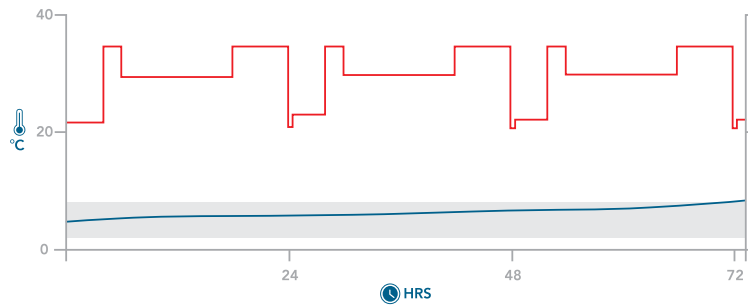
COOLPALL FLEX™ WATER PRODUCT SPECIFICATION

Product	Litres	Exterior Dimensions WxDxH		Interior Dimensions WxDxH		Tare Weight		
		mm	inches	mm	inches	kg	lbs	
EURO PALLET	Single Pod NBA	175	1210 x 802 x 717	47.6 x 31.5 x 28.2	928 x 530 x 356	36.5 x 20.8 x 14.1	70.1	154.2
	Double Pod NBA	150	1210 x 802 x 717	47.6 x 31.5 x 28.2	928 x 455 x 356	36.5 x 17.9 x 14.1	81.7	179.7
	Single Pod HH	359	1210 x 802 x 1110	47.6 x 31.5 x 43.7	928 x 530 x 729	36.5 x 20.8 x 28.7	95.9	210.9
	Double Pod HH	308	1210 x 802 x 1110	47.6 x 31.4 x 43.7	928 x 455 x 729	36.5 x 17.9 x 28.7	120.9	265.9
	Single Pod FH	549	1210 x 802 x 1501	47.6 x 31.5 x 59	928 x 530 x 1117	36.5 x 20.8 x 43.9	123.7	272.1
	Double Pod FH	472	1210 x 802 x 1501	47.6 x 31.5 x 59	928 x 455 x 1117	36.5 x 17.9 x 43.9	164.3	361.46
ISO PALLET	Single Pod NBA	241	1210 x 1002 x 717	47.6 x 39.4 x 28.2	928 x 730 x 356	36.5 x 28.7 x 14.1	85.3	187.6
	Double Pod NBA	216	1210 x 1002 x 717	47.6 x 39.4 x 28.2	928 x 655 x 356	36.5 x 25.7 x 14.1	99.1	218
	Single Pod HH	494	1210 x 1002 x 1110	47.6 x 39.4 x 43.7	928 x 730 x 729	36.5 x 28.7 x 28.7	113.7	250.1
	Double Pod HH	443	1210 x 1002 x 1110	47.6 x 39.4 x 43.7	928 x 655 x 729	36.5 x 25.7 x 28.7	140.9	309.9
	Single Pod FH	757	1210 x 1002 x 1501	47.6 x 39.4 x 59	928 x 730 x 1117	36.5 x 25.7 x 43.9	141.9	312.1
	Double Pod FH	679	1210 x 1002 x 1501	47.6 x 39.4 x 59	928 x 655 x 1117	36.5 x 25.7 x 43.9	182.6	401.7

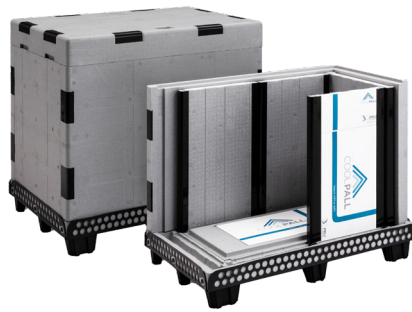
ADDITIONAL DATA

Series 4 CoolPall™ Flex Advance Half Height Single Pod

Single Layer ISO +2°C to +8°C ISTA7D HOT 68 hours



Narrow Bodied Aircraft



Half Height



Full Height



FOR MORE INFORMATION ABOUT PELI BIOTHERMAL PRODUCTS [CLICK HERE](#)

FOR MORE INFORMATION ABOUT PELI BIOTHERMAL PRODUCTS, PLEASE CONTACT:

EMEA OFFICE - INFOEMEA@PELIBIOTHERMAL.COM T: +44 (0)1525 243 770

AMERICAS OFFICE - INFOAMERICAS@PELIBIOTHERMAL.COM T: +1(763) 412-4800 TOLL FREE US: T: +(877) 537-9800

ASIA OFFICE - INFOASIA@PELIBIOTHERMAL.COM T: +65 6681 0095

PELIBIOTHERMAL.COM

ISO17025, ISO9001-2008 Accredited

Golden Hour™, TIC™, Crêdo™, Crêdo Cube™, Crêdo ProEnvision™, Crêdo Xtreme™, Crêdo Duracube™, Crêdo ProMed™, Sherpa Systems™, CoolGuard™ and CoolPall™ are registered trademarks of Pelican Products Inc., its subsidiaries and / or affiliates



©2022 Peli BioThermal Ltd all rights reserved